



Government of India  
Ministry of Earth Sciences  
India Meteorological Department



Press Release  
Date: 01<sup>st</sup> May 2026  
Time of Issue: 1330 hours IST

**Subject: (i) Fairly widespread to widespread rainfall along with thunderstorm, lightning and gusty winds (40-60 kmph) with heavy to very heavy rainfall likely over Sub Himalayan West Bengal & Sikkim and northeast India during the week.**

**(ii) Isolated thunderstorms, lightning & gusty winds (40-60 kmph) likely over Western Himalayan region, plains of northwest & adjoining central India during 03<sup>rd</sup>-07<sup>th</sup> May, 2026.**

**Realised weather during past 24 hours ending at 0830 hours IST of today, the 01<sup>st</sup> May, 2026:**

- ❖ **Heavy to very heavy rainfall (7-20 cm)** has been recorded at isolated places over Kerala & Mahe.
- ❖ **Heavy rainfall (7-11 cm)** has been recorded at isolated places over Assam, Odisha, South interior Karnataka and Tamil Nadu.
- ❖ **Thunderstorm accompanied with Squally/Gusty winds with speed reaching 50-75 kmph** prevailed at isolated places over Bihar, Madhya Maharashtra, Uttarakhand, Gangetic West Bengal, Mizoram, Chhattisgarh, East Rajasthan, Jharkhand, Odisha, Madhya Pradesh, West Uttar Pradesh; **with speed reaching 30-50 kmph** prevailed at isolated places over Konkan, Marathawada, Arunachal Pradesh, Vidarbha, Assam, East Uttar Pradesh, Gujarat State and Bihar.
- ❖ **Hailstorm** reported over Himachal Pradesh, Uttarakhand, Haryana, Uttar Pradesh, Madhya Pradesh, Chhattisgarh, Odisha and Telangana.

**Temperature Conditions during past 24 hours till 0830 hours IST of today:**

- ❖ **Maximum/day temperatures** were in the range of 38-40°C over most parts of the Vidarbha, Telangana, Marathawada; at isolated places over West Rajasthan, Chhattisgarh; in the range of 34 -38°C over remaining parts of the country except over East Uttar Pradesh, Bihar, Gangetic West Bengal, Sub-Himalayan West Bengal & Sikkim, entire north East India and Western Himalayan region, where they were below 34°C. **Yesterday, the highest maximum temperature of 44.6°C was reported at CHANDRAPUR (CHANDA) (MAHARASHTRA).**
- ❖ **Maximum/day temperatures** were above normal (1.6 to 3.0°C) over West Rajasthan, Konkan & Goa, Vidarbha, Telangana, Coastal Andhra Pradesh & Yanam, Tamil Nadu, Puducherry & Karaikal, Kerala & Mahe, Andaman & Nicobar Islands. These were below normal or near normal over rest parts of the country.
- ❖ **Minimum/night temperatures** were in the range of 13-19°C over Himachal Pradesh, Uttarakhand, East Uttar Pradesh, Assam & Meghalaya, Mizoram. They were in the range of 20-26°C over remaining parts of the plains of the country.
- ❖ **Minimum/night Temperature** were appreciably above normal (3.1°C to 5.0°C) over Saurashtra & Kutch, Andaman & Nicobar Islands; above normal (1.6 to 3.0°C) over south Rajasthan, Gujarat Region, Vidarbha, Coastal Andhra Pradesh & Yanam, North Interior Karnataka, Tamil Nadu, Puducherry & Karaikal and below normal or near normal over rest parts of the country.

**Weather Systems, Forecast and Warnings (refer to ANNEXURE I & II):**

- ❖ The **Western Disturbance** seen as a cyclonic circulation over Kashmir & neighbourhood in middle tropospheric levels.
- ❖ Another **Western Disturbance** seen as a trough in middle tropospheric westerlies roughly along Long. 55°E to the north of Lat. 30°N.
- ❖ An upper air **cyclonic circulation** lies over north Punjab & neighbourhood in lower tropospheric levels.
- ❖ A **trough/wind discontinuity** runs from South Odisha to Gulf of Mannar in lower tropospheric levels.
- ❖ An upper air **cyclonic circulation** lies over Gangetic West Bengal & adjoining Bangladesh in lower tropospheric levels.

- ❖ An upper air **cyclonic circulation** lies over southeast Bangladesh and neighbourhood in lower & middle tropospheric levels with the trough aloft with its axis at 7.6 km above mean sea level runs roughly along Long. 89°E to the north of Lat. 20°N above mean sea level.

### Under the influence of above systems, the following weather is likely:

#### Northwest India:

- ❖ **Scattered to fairly widespread** light to moderate rainfall/snowfall with **thunderstorm, lightning & gusty winds (speed reaching 40-50 kmph)** likely over Jammu-Kashmir during 02<sup>nd</sup>-05<sup>th</sup> May; Himachal Pradesh and Uttarakhand during 03<sup>rd</sup>-07<sup>th</sup> May.
- ❖ **Isolated to scattered** light to moderate rainfall with **thunderstorm, lightning & gusty winds (speed reaching 30-40 kmph)** likely over Punjab, Haryana, Chandigarh during 02<sup>nd</sup>-07<sup>th</sup>; Rajasthan during 01<sup>st</sup>-07<sup>th</sup>; West Uttar Pradesh during 04<sup>th</sup>-06<sup>th</sup>; East Uttar Pradesh during 04<sup>th</sup>-07<sup>th</sup> May.
- ❖ Isolated **Hailstorm activity** likely over Jammu-Kashmir on 03<sup>rd</sup>; Himachal Pradesh on 03<sup>rd</sup> & 04<sup>th</sup>; Uttarakhand on 04<sup>th</sup> & 05<sup>th</sup> May.

#### Northeast India:

- ❖ **Fairly widespread to widespread** light to moderate rainfall with **thunderstorm, lightning gusty winds (speed reaching 30-50 kmph)** likely over Northeast India during next 4-5 days.
- ❖ **Isolated heavy rainfall** likely over Arunachal Pradesh during 01<sup>st</sup>-04<sup>th</sup> & on 06<sup>th</sup> & 07<sup>th</sup>; Assam & Meghalaya during 01<sup>st</sup>-04<sup>th</sup> & on 07<sup>th</sup>; Nagaland, Manipur, Mizoram & Tripura during 01<sup>st</sup>-05<sup>th</sup> with isolated **very heavy rainfall** likely over Arunachal Pradesh and Nagaland, Manipur, Mizoram & Tripura on 01<sup>st</sup>; Assam & Meghalaya during 01<sup>st</sup>-03<sup>rd</sup> May.

#### East India:

- ❖ **Fairly widespread to widespread** light to moderate rainfall with **thunderstorm, lightning gusty winds (speed reaching 30-50 kmph)** likely over West Bengal & Sikkim during next 5 days.
- ❖ **Isolated to scattered light** to moderate rainfall with **thunderstorm, lightning gusty winds (speed reaching 40-50 kmph)** likely over Bihar and Odisha during 01<sup>st</sup>-05<sup>th</sup>; Jharkhand during 01<sup>st</sup>-07<sup>th</sup> May.
- ❖ **Thundersquall (wind speed reaching 50-60 kmph gusting to 70 kmph)** likely over Sub-Himalayan West Bengal & Sikkim, Jharkhand & Odisha on 01<sup>st</sup>; Gangetic West Bengal on 01<sup>st</sup>, 03<sup>rd</sup> & 04<sup>th</sup> and Bihar on 04<sup>th</sup> May.
- ❖ **Isolated heavy rainfall** likely over Sub-Himalayan West Bengal & Sikkim during 01<sup>st</sup>-03<sup>rd</sup>; Bihar on 01<sup>st</sup> May with isolated **very heavy falls** over Sub-Himalayan West Bengal & Sikkim on 01<sup>st</sup> & 02<sup>nd</sup> May.
- ❖ Isolated **Hailstorm activity** likely over Odisha 01<sup>st</sup> May.

#### Central India:

- ❖ **Isolated** light to moderate rainfall with **thunderstorm, lightning gusty winds (speed reaching 30-50 kmph)** likely over Madhya Pradesh and Chhattisgarh during next 5 days; Vidarbha during 03<sup>rd</sup>-05<sup>th</sup> May.
- ❖ **Thundersquall (wind speed reaching 50-60 kmph gusting to 70 kmph)** likely over Chhattisgarh on 03<sup>rd</sup> & 04<sup>th</sup> May.

#### South Peninsular India:

- ❖ **Isolated to scattered** light to moderate rainfall with **thunderstorm, lightning & gusty winds (speed reaching 30-50 kmph)** likely over Tamil Nadu, Puducherry & Karaikal, Kerala & Mahe, Coastal Andhra Pradesh & Yanam, Rayalaseema, Telangana & South Interior Karnataka during 01<sup>st</sup>-05<sup>th</sup>; Lakshadweep on 01<sup>st</sup>; North Interior Karnataka on 01<sup>st</sup> & 02<sup>nd</sup> May; **with lightning** over Coastal Karnataka on 01<sup>st</sup> & 02<sup>nd</sup> May.
- ❖ **Thundersquall (wind speed reaching 50-60 kmph gusting to 70 kmph)** likely over Coastal Andhra Pradesh & Yanam on 01<sup>st</sup>, 04<sup>th</sup> & 05<sup>th</sup> May.
- ❖ **Heavy rainfall** also likely over Tamil Nadu, Puducherry & Karaikal and Kerala & Mahe during 01<sup>st</sup>-04<sup>th</sup> May.

#### Forecast of maximum/day temperatures:

- ❖ No significant change in maximum temperatures likely over Northwest India till 02<sup>nd</sup> May and gradual fall by 3-5°C during 03<sup>rd</sup>-07<sup>th</sup> May.
- ❖ Gradual rise in maximum temperatures by about 2°C likely over Madhya Pradesh till 02<sup>nd</sup> May and gradual fall by 3-5°C during 03<sup>rd</sup>-07<sup>th</sup> May.
- ❖ No significant change in maximum temperatures likely over Vidarbha and Chhattisgarh till 03<sup>rd</sup> May and gradual fall by 2-3°C during 03<sup>rd</sup>-07<sup>th</sup> May.

- ❖ No significant change in maximum temperatures likely over Gujarat State till 02<sup>nd</sup> May and gradual fall by 2-3°C during 03<sup>rd</sup>-07<sup>th</sup> May.
- ❖ No significant change in maximum temperatures likely over rest parts of the country till 07<sup>th</sup> May 2026.

#### Hot & Humid weather conditions warning:

- ❖ **Hot & humid weather conditions** very likely to prevail in isolated pockets over Tamil Nadu, Puducherry & Karaikal during 01<sup>st</sup>-05<sup>th</sup>; Coastal Karnataka on 01<sup>st</sup> & 02<sup>nd</sup> and Coastal Andhra Pradesh & Yanam during 01<sup>st</sup>-03<sup>rd</sup> May.

#### Fishermen warning:

- ❖ Fishermen are advised not to venture into the following areas:
- ❖ **Bay of Bengal:** along and off Odisha Coast and adjoining North Andhra Pradesh Coast, West Bengal Coast and Bangladesh Coast & over many parts of northwest Bay of Bengal, adjoining parts of northeast Bay of Bengal and westcentral Bay of Bengal during 01<sup>st</sup> May to 04<sup>th</sup> May; along and off Odisha, West Bengal Coasts and adjoining Bangladesh Coast & over some parts of northwest Bay of Bengal on 04<sup>th</sup> May.
- ❖ **Arabian Sea:** No warning.

#### Weather conditions and forecast over Delhi/NCR during 01<sup>st</sup> -04<sup>th</sup> May, 2026 (ANNEXURE III)

For more details, kindly refer National Weather Bulletin:

[https://mausam.imd.gov.in/responsive/all\\_india\\_forecast\\_bulletin.php](https://mausam.imd.gov.in/responsive/all_india_forecast_bulletin.php)

For District wise warnings refer: <https://mausam.imd.gov.in/responsive/districtWiseWarningGIS.php>

For Fishermen warning refer <https://rsmcnewdelhi.imd.gov.in/fishermenwarning.php>

#### Significant rainfall recorded (in cm) (from 0830 hours IST of yesterday to 0830 hours IST of today):

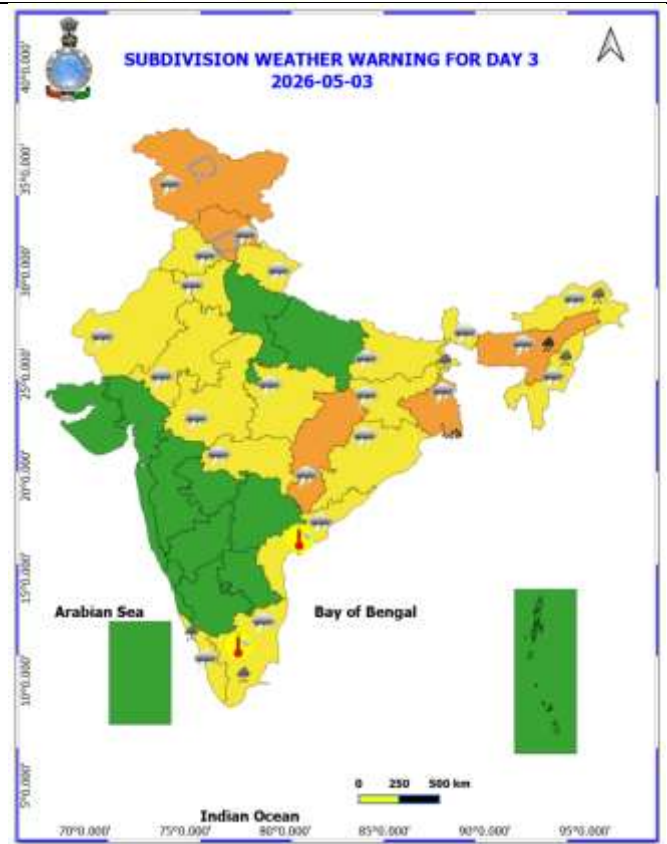
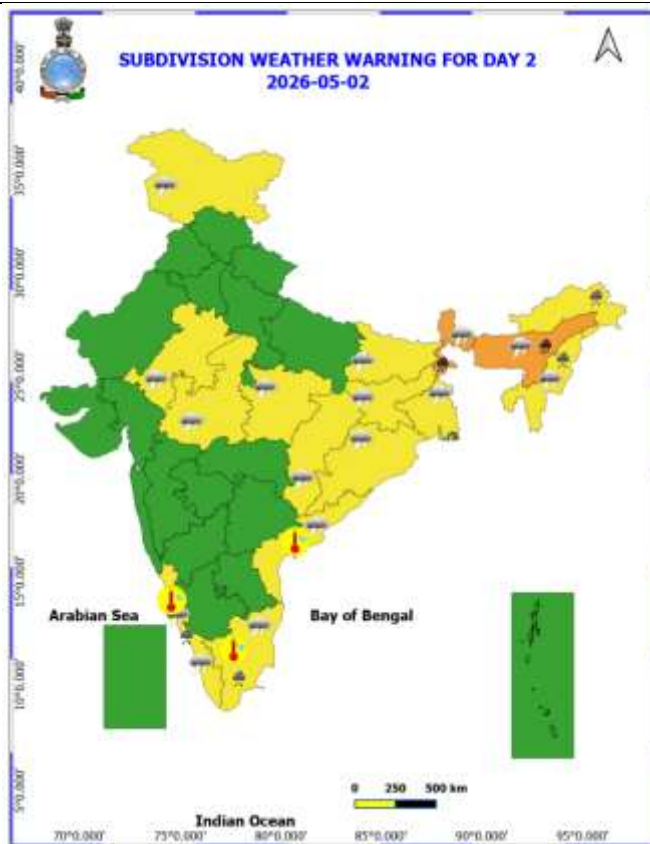
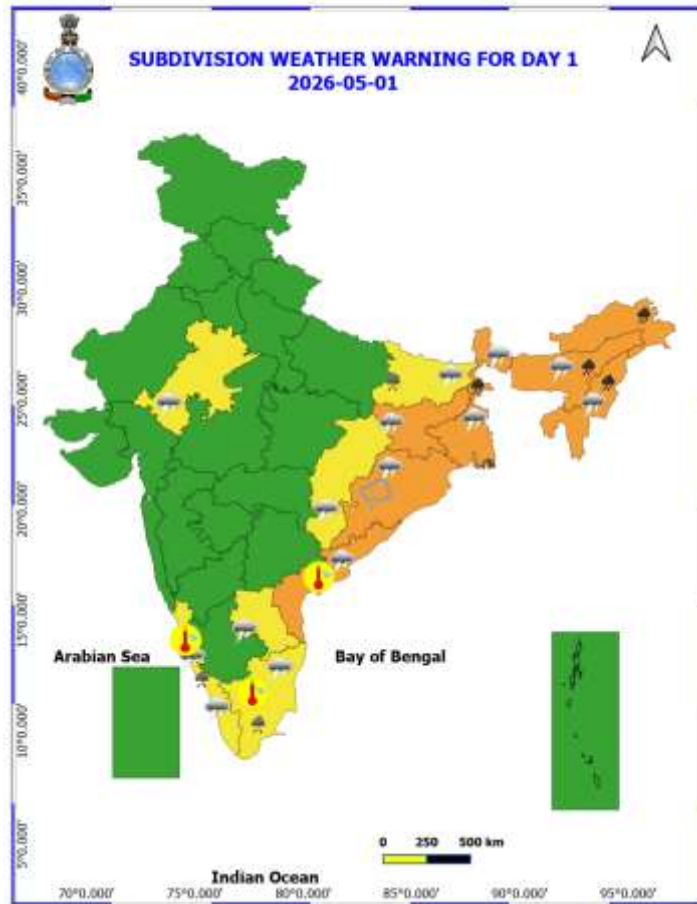
- ❖ **Kerala & Mahe:** Palode (dist Thiruvananthapuram) 12, Thennala (dist Malappuram) 7;
- ❖ **Odisha:** Banspal (dist Keonjhar) 9; Puri (dist Puri), Remuna (dist Balasore), Betanati (dist Mayurbhanj) 7 Each; Jagannath Prasad (dist Ganjam), Narsinghpur (dist Cuttack), Chhatrapur (dist Ganjam), R Guda (dist Rayagada), Deogaon (dist Bolangir), Ganjam (dist Ganjam), Daringibadi (dist Kandhamal) 6 Each;
- ❖ **Tamil Nadu:** Oothu (dist Tirunelveli) 8, Nalumukku (dist Tirunelveli), Kakkachi (dist Tirunelveli) 7 each;
- ❖ **Karnataka:** Ramanagara\_Magadi\_Ajjanahalli 8;
- ❖ **Assam:** Beky Rly.bridge (dist Barpeta) 7

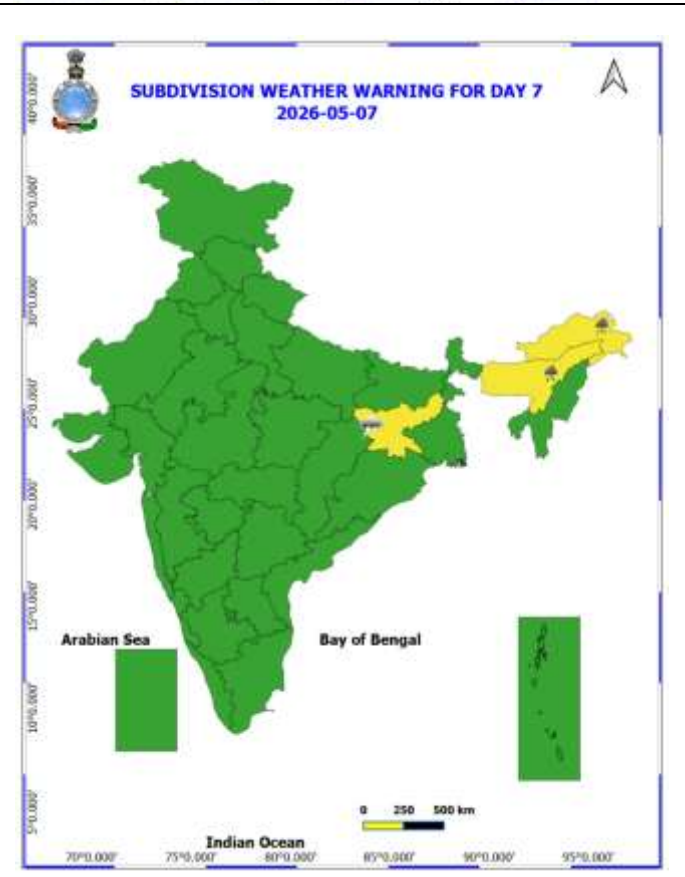
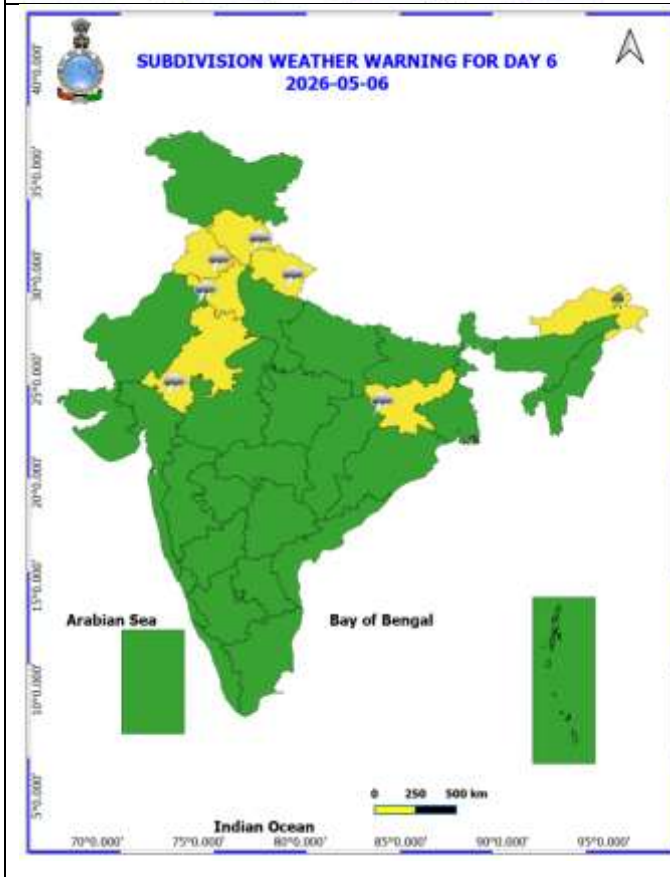
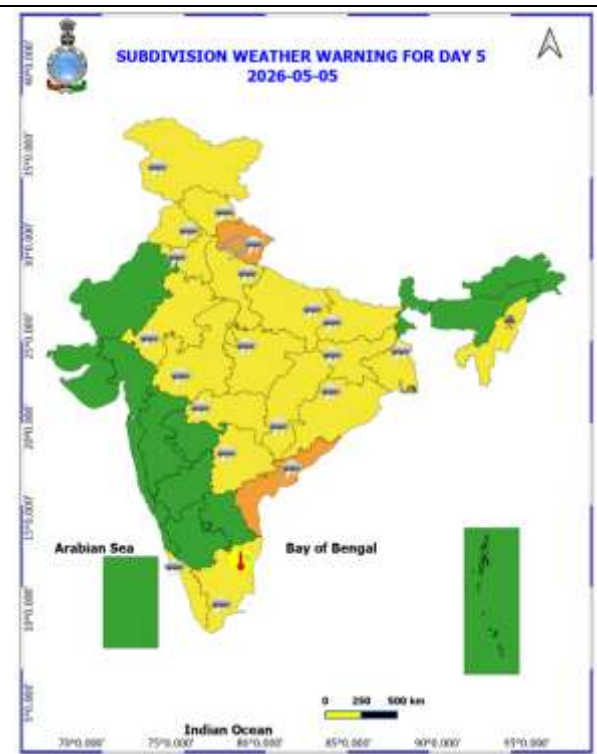
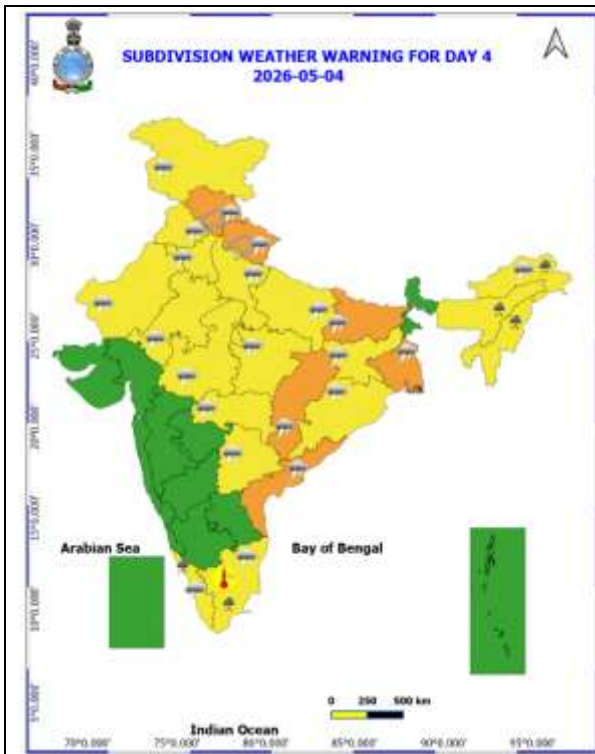
#### Gusty winds (in kmph) (from 0830 hours IST of yesterday to 0830 hours IST of today):

- ❖ **West Uttar Pradesh:** Jalaun 74, Bulandshahar 67, Agra 64, Amroha 59, Shamli 59, Shahjahanpur 57, Hindon 57, Merut 57, Bareilly 57;
- ❖ **East Madhya Pradesh:** Sidhi 74, Jabalpur 74, Shahdol 57, Satna 56, Sagar 46, Rewa 43;
- ❖ **West Madhya Pradesh:** Bhopal 70, Gwlior 59, Sehore 57, Ashoknagar, Vidisha 43, Shivpuri 41, Agar, Rajgarh 39, Ujjain, Indore 37, Barwani, Guna 33, Hosanagabad, Dhar, Betul 31, Khandwa, Neemuch, Mandsaur 30;
- ❖ **Odisha:** Bhubaneswar 70, Janhukuda 63, Mayurbhanj 61, Benakuda, Cuttack 56, Pitapalii 52, Gunupur 50;
- ❖ **Jharkhand:** Simdega 67, Barhi, Palamu 56, Khunti 50, Gumla 48, Giridh 44;
- ❖ **East Rajasthan:** Jaipur 65;
- ❖ **Chhattisgarh:** Koriya 61, Mungeli 61, Korba 57, Janjgir 50, Surajpur 48, Bemetara 46, Balrampur 43, Bilaspur-39, Raipur39, Durg 35, Balod 33;
- ❖ **Mizoram:** Champhai 56;
- ❖ **Gangetic West Bengal:** Dum Dum 55, Digha 65, Alipore 35, Jhargram 85, Kakdwip 81, Kharagpur 78, Howrah 72, Barrackpore 54, Kalyani 43, Purulia 46;
- ❖ **Uttarakhand:** Pantnagar 52, Kashipur 52, Kosiyakatauli 46, Ranichauri 46, Jeolikot 44, chaubatia 44, Jollygrant 44;
- ❖ **Madhya Maharashtra:** Vilholi (NASHIK) 50, Kalwan (Nashik) 50, Shahada (Nandurbar) 48;
- ❖ **Saurashtra & Kutch:** Bhachau 48;
- ❖ **Bihar:** Arwal 48, Rajgir 46, Aurangabad, Sheikhpura 41, Bikramganj 37, IIT Patna 35;
- ❖ **Gujarat Region:** Arnej 46;
- ❖ **East Uttar Pradesh:** Fursatganj 41, Kanpur 39, Lucknow 37, Gorakhpur 33;
- ❖ **Assam:** Manas 41;
- ❖ **Vidarbha:** Buldhana 41;
- ❖ **Arunachal Pradesh:** Deomali 39;
- ❖ **Marathawada:** Hingoli 39, Dharashiv 35;
- ❖ **Konkan:** Karjat (Raigad) 31, Palghar 31.

Table-1								
7 Days Rainfall Forecast								
S.No.	Subdivision	1- May	2- May	3- May	4- May	5- May	6- May	7- May
		Day 1	Day 2	Day 3	Day 4	Day 5	Day 6	Day 7
1	ANDAMAN & NICOBAR ISLANDS	DRY	DRY	DRY	SCT	ISOL	ISOL	ISOL
2	ARUNACHAL PRADESH	WS	WS	WS	FWS	FWS	FWS	WS
3	ASSAM & MEHGHALAYA	WS	WS	WS	FWS	FWS	FWS	FWS
4	NAGALAND, MANIPUR, MIZORAM AND TRIPURA	WS	WS	WS	FWS	FWS	SCT	SCT
5	SUB HIMALAYAN WEST BENGAL & SIKKIM	WS	WS	WS	FWS	FWS	FWS	FWS
6	GANGETIC WEST BENGAL	SCT	FWS	FWS	WS	FWS	SCT	SCT
7	ODISHA	SCT	SCT	SCT	SCT	SCT	ISOL	ISOL
8	JHARKHAND	SCT	ISOL	ISOL	SCT	SCT	SCT	SCT
9	BIHAR	SCT	ISOL	ISOL	SCT	ISOL	ISOL	ISOL
10	EAST UTTAR PRADESH	ISOL	ISOL	ISOL	SCT	SCT	SCT	ISOL
11	WEST UTTAR PRADESH	DRY	DRY	ISOL	SCT	SCT	SCT	ISOL
12	UTTARAKHAND	ISOL	ISOL	FWS	FWS	FWS	SCT	SCT
13	HARYANA, CHANDIGARH & DELHI	DRY	ISOL	ISOL	SCT	SCT	ISOL	ISOL
14	PUNJAB	DRY	ISOL	ISOL	SCT	SCT	ISOL	ISOL
15	HIMACHAL PRADESH	ISOL	ISOL	FWS	FWS	SCT	SCT	ISOL
16	JAMMU AND KASHMIR AND LADAKH	SCT	SCT	WS	FWS	FWS	ISOL	ISOL
17	WEST RAJASTHAN	ISOL	ISOL	ISOL	ISOL	ISOL	ISOL	ISOL
18	EAST RAJASTHAN	ISOL	ISOL	ISOL	ISOL	ISOL	ISOL	ISOL
19	WEST MADHYA PRADESH	ISOL	ISOL	ISOL	ISOL	ISOL	ISOL	ISOL
20	EAST MADHYA PRADESH	ISOL	ISOL	ISOL	ISOL	ISOL	ISOL	ISOL
21	GUJRAT REGION	DRY	DRY	DRY	DRY	DRY	DRY	DRY
22	SAURASHTRA & KUTCH	DRY	DRY	DRY	DRY	DRY	DRY	DRY
23	KONKAN & GOA	DRY	DRY	DRY	DRY	DRY	DRY	DRY
24	MADHYA MAHARASHTRA	DRY	DRY	DRY	DRY	DRY	DRY	DRY
25	MARATHWADA	DRY	DRY	DRY	DRY	DRY	ISOL	ISOL
26	VIDARBHA	DRY	DRY	ISOL	ISOL	ISOL	ISOL	DRY
27	CHHATTISGARH	ISOL	ISOL	ISOL	ISOL	ISOL	ISOL	ISOL
28	COASTAL ANDHRA PRADESH	ISOL	ISOL	ISOL	ISOL	ISOL	ISOL	ISOL
29	TELANGANA	ISOL	ISOL	ISOL	SCT	SCT	SCT	SCT
30	RAYALASEEMA	ISOL	ISOL	ISOL	ISOL	ISOL	ISOL	ISOL
31	TAMILNADU & PUDUCHERRY	SCT	SCT	ISOL	SCT	ISOL	ISOL	ISOL
32	COSTAL KARNATAKA	ISOL	ISOL	ISOL	ISOL	ISOL	ISOL	ISOL
33	NORTH INTERIOR KARNATAKA	ISOL	ISOL	ISOL	ISOL	SCT	ISOL	ISOL
34	SOUTH INTERIOR KARNATAKA	SCT	ISOL	ISOL	ISOL	SCT	ISOL	ISOL
35	KERALA AND MAHE	FWS	FWS	FWS	FWS	FWS	FWS	FWS
36	LAKSHADWEEP	SCT	SCT	SCT	SCT	SCT	SCT	SCT

- As the lead period increases forecast accuracy decrease.





- Action may be taken based on ORANGE AND REDCOLOUR warnings.
- Vulnerable regions likely urban and hilly areas action may be initiated for heavy rainfall warning.
- As the lead period increases forecast accuracy decreases.

Detailed district-wise Multi-Hazard weather warning for next five days available at <https://mausam.imd.gov.in/responsive/districtWiseWarningGIS.php>

## Weather forecast over Delhi/NCR during 01<sup>st</sup> May to 04<sup>th</sup> May 2026

### Past Weather:

There has been rise in maximum temperatures up to 2-3°C and fall in minimum temperature by 2-4°C during past 24 hours over Delhi. The maximum temperatures were in the range of 39-40°C and the minimum temperatures are in the range 20-23°C respectively during past 24 hours over Delhi. The minimum temperatures were appreciably below normal (-3.1°C to -5.0°C) at few places and below normal (-1.6°C to -3.0°C) at remaining places over Delhi. The maximum temperatures were near normal (-1.5°C to 1.5°C) at most places over Delhi. Partly cloudy sky becoming generally cloudy sky with surface wind speeds up to 20 kmph gusting up to 51 kmph prevailed from southeast direction over Delhi during past 24 hours. During the past 24 hours, very light to light rain was observed at isolated places over Delhi. Partly cloudy sky with surface wind speeds up to 15 kmph likely to prevailed from east direction over the region in the forenoon today.

### Weather Forecast:

**01.05.2026:** Partly cloudy sky. Possibility of thundery development towards afternoon/evening. The maximum temperatures over Delhi are likely to be in the range of 36°C to 38°C. The maximum temperatures will be below normal (-1.6°C to -3.0°C) at most places over Delhi. The predominant surface wind is likely to be from the northwest direction with surface wind speed reaching up to 20 kmph during the afternoon hours. The wind speed will gradually decrease becoming less than 15 kmph from the northeast direction during evening and night.

**02.05.2026:** Partly cloudy sky. The maximum and minimum temperatures over Delhi are likely to be in the range of 38°C to 40°C and 24°C to 26°C respectively. The minimum temperature will be near normal (-1.5°C to 1.5°C) at most places, and maximum temperatures will be near normal (-1.5°C to 1.5°C) at most places over Delhi. The predominant surface wind is likely to be from southeast direction with surface wind speed reaching up to 15 kmph during the morning hours. The wind speed will be increase becoming less than 18 kmph from northwest direction during the afternoon. The wind speed gradually decreases becoming less than 10 kmph from the southwest direction during evening and night.

**03.05.2026:** Partly cloudy sky becoming generally cloudy sky towards afternoon. A spell of very light to light rain accompanied with thunderstorm/lightning and strong winds speed 30-40 kmph gusting to 50 kmph during afternoon to evening. The maximum and minimum temperatures over Delhi are likely to be in the range of 36°C to 38°C and 25°C to 27°C respectively. The minimum temperature will be above normal (1.6°C to 3.0°C) at most places, and the maximum temperature will be below normal (-1.6 to -3.0°C) at most places over Delhi. The predominant surface wind is likely to be from the east direction with wind reaching up to 15 kmph during the morning hours. The surface wind speed will be increase becoming up to 18 kmph from southeast direction during the afternoon. The surface wind will increase becoming up to 25 kmph from southeast direction during evening and night.

**04.05.2026:** Generally cloudy sky. One or two spells of very light to light rain accompanied with thunderstorm/lightning and strong winds speed 30-40 kmph gusting to 50 kmph during the day. The maximum and minimum temperatures over Delhi are likely to be in the range of 35°C to 37°C and 24°C to 26°C respectively. The minimum temperature will be near normal (-1.5°C to 1.5°C) at most places, and the maximum temperature will be below normal (-1.6 to -3.0°C) at most places over Delhi. The predominant surface wind is likely to be from the east direction with wind reaching up to 25 kmph during the morning hours. The surface wind speed will decrease becoming up to 20 kmph from southeast direction during the afternoon. The surface wind speed will decrease becoming less than 18 kmph from the southeast direction during evening and night.

### Impact expected and action suggested due to thunderstorm with lightning/gusty winds:

- **Warning:** Thunderstorms with lightning and gusty winds (30–40 kmph, gusting up to 50 kmph) along with dust-raising surface winds are likely.
- **Impacts:** Breaking of tree branches, uprooting of trees, damage to crops, disruption to power and communication lines, partial damage to weak structures, and loose objects being blown away.
- **Advisory:** Stay indoors and keep windows and doors closed. Avoid travel if possible. Do not take shelter under trees. Stay away from concrete walls/floors, water bodies, and electrical conductors. Unplug electronic devices and remain alert for worsening weather conditions.

## **Impact expected and action suggested due to isolated thunderstorm with lightning/squally winds & Hailstorm over**

- ❖ **Thundersquall (wind speed reaching 50-60 kmph gusting to 70 kmph)** likely over Sub-Himalayan West Bengal & Sikkim, Jharkhand & Odisha on 01<sup>st</sup>; Gangetic West Bengal on 01<sup>st</sup>, 03<sup>rd</sup> & 04<sup>th</sup>; Coastal Andhra Pradesh & Yanam on 01<sup>st</sup>, 04<sup>th</sup> & 05<sup>th</sup>; Chhattisgarh on 03<sup>rd</sup> & 04<sup>th</sup> and Bihar on 04<sup>th</sup> May.
- ❖ Isolated **Hailstorm activity** likely over Odisha 01<sup>st</sup>; Jammu-Kashmir on 03<sup>rd</sup>; Himachal Pradesh on 03<sup>rd</sup> & 04<sup>th</sup>; Uttarakhand on 04<sup>th</sup> & 05<sup>th</sup> May.

### **Impact expected:**

- Breaking of tree branches, uprooting of large avenue trees. Large dead limbs blown from trees. Damage to Standing crops.
- Minor to Major damage to banana and papaya trees.
- Minor to major damage to power and communication lines due to breaking of branches.
- Strong wind/hail may damage plantation, horticulture and standing crops.
- Hail may injure people and cattle at open places.
- Partial damage to vulnerable structures due to strong winds.
- Minor damage to kutcha houses/walls and huts.
- Loose objects may fly.

### **Action suggested:**

- People are advised to keep a watch on the weather for worsening conditions and be ready to move to safer places accordingly.
- Stay indoors, close windows & doors and avoid travel if possible.
- Take safe shelters; do not take shelter under trees.
- Do not lie on concrete floors and do not lean against concrete walls.
- Unplug electrical/ electronic appliances.
- Immediately get out of water bodies.
- Keep away from all the objects that conduct electricity.

## **Impact Expected & Action Suggested due to heavy/very heavy rainfall over**

- ❖ **Isolated Heavy rainfall** likely over Bihar on 01<sup>st</sup>; Arunachal Pradesh during 01<sup>st</sup>-04<sup>th</sup> & on 06<sup>th</sup> & 07<sup>th</sup>; Assam & Meghalaya during 01<sup>st</sup>-04<sup>th</sup> & on 07<sup>th</sup>; Nagaland, Manipur, Mizoram & Tripura during 01<sup>st</sup>-05<sup>th</sup>; Sub-Himalayan West Bengal & Sikkim during 01<sup>st</sup>-03<sup>rd</sup>; Tamil Nadu, Puducherry & Karaikal and Kerala & Mahe during 01<sup>st</sup>-04<sup>th</sup> May.
- ❖ Isolated **very heavy rainfall** likely over Arunachal Pradesh and Nagaland, Manipur, Mizoram & Tripura on 01<sup>st</sup>; Assam & Meghalaya during 01<sup>st</sup>-03<sup>rd</sup> and Sub-Himalayan West Bengal & Sikkim on 01<sup>st</sup> & 02<sup>nd</sup> May.

### **Impact Expected**

- Localized Flooding of roads, water logging in low lying areas and closure of underpasses mainly in urban areas.
- Occasional reduction in visibility due to heavy rainfall.
- Disruption of traffic in major cities due to water logging in roads leading to increased travel time.
- Minor damage to kutcha roads.
- Possibilities of damage to vulnerable structure.
- Localized Landslides/Mudslides/landslips/mudslips/landsinks/mudsinks.
- Damage to horticulture and standing crops in some areas due to inundation.
- It may lead to riverine flooding in some river catchments (for riverine flooding please visit Web page of CWC)

### **Action Suggested**

- Check for traffic congestion on your route before leaving for your destination.
- Follow any traffic advisories that are issued in this regard.
- Avoid going to areas that face the water logging problems often.
- Avoid staying in vulnerable structure.

### Agromet advisories for likely impact of Hailstorms

- In **Odisha**, use hail nets or hail caps in fruit orchards and vegetable plants to protect them from mechanical damage.
- Ensure effective field drainage to prevent waterlogging. Undertake picking of matured fruits at the earliest. Keep the harvested produce in safe places.

### Agromet advisories for likely impact of Heavy Rainfall

- In **Arunachal Pradesh**, postpone the sowing of WRC paddy nurseries. Ensure proper drainage in the fields of rice, maize, other standing crops, vegetables, and orchards. Keep the harvested cabbage, pea, mustard, late-maturing paddy & potatoes produce to safe places.
- In **Assam**, maintain proper drainage to avoid water stagnation in the crop fields. Prioritise immediate harvesting of the mature crops and move the produce to a dry, covered warehouse during clear weather conditions. Provide mechanical support for tall crops (like banana or sugarcane) and young saplings by using bamboo sticks or poles.
- **Meghalaya**- Provide proper drainage in maize, ginger, vegetables and orchards. Provide staking/bamboo support to prevent lodging.
- In **Manipur**, postpone sowing of soybean and groundnut. Drain out excess rainwater and top-dress the crop after the current rain spells. Avoid rainwater stagnation for long periods in crop fields (chilli, ginger, turmeric, banana, etc.).
- In **Mizoram**, create drainage channels surrounding the rice fields and utilize grass mulch to cover the seeds. Provide support to fruit-bearing or partially lodge plants/trees. Propping should be done to prevent maize plants from lodging.
- In **Nagaland**, Maintain drainage in low-lying areas and in crop fields (potato, foxtail millet. Keep the maize field covered with locally available mulch, such as farm residue or paddy straw. Provide propping to the banana plant to prevent lodging.
- **Tripura** - Ensure proper drainage to prevent standing water in vegetable, watermelon, and orchard fields.
- In **West Bengal and Sikkim**, ensure proper field drainage to prevent waterlogging, particularly in ginger, tomato, and *Dalle Khorsani* fields. Protect the nurseries of cucurbits and *Dalle Khorsani* by covering them with polyethene sheets or agro-net to safeguard young seedlings. Additionally, apply locally available mulching materials in ginger fields to minimize the direct impact of rainfall.
- In **Kerala**, provide adequate drainage for banana, coconut, and other vegetables. Provide support to banana plants.
- In **Tamilnadu**, maintain proper drainage to avoid water stagnation in blackgram, green gram, sugarcane, plantations and vegetables.

### Agromet advisories for likely impact of High temperatures/ Heat Waves

- **Maharashtra –Vidarbha** - apply need-based light and frequent irrigation to summer green gram, groundnut, onion, sunflower, sesame, fodder crops, orchards, and vegetables during cooler hours. Use straw mulch in vegetable and orchard crops to reduce evaporation, and install shade nets for newly planted crops.
- **Madhya Pradesh** - Apply light irrigation to maize, *moong*, *urd*, groundnut, and vegetable crops as required.
- **Rajasthan** - Provide light irrigation to maintain adequate moisture in standing crops such as Zaid moong, American cotton & *Desi* cotton, okra, watermelon, muskmelon, *tinda*, cucumber & long melon.
- **Odisha** - Provide light irrigation to *Boro* paddy, summer maize, green gram, black gram, groundnut, and vegetable fields. Ensure adequate soil moisture is maintained in mango and cashew crops.
- **Telangana** - Provide irrigation to mango orchards and vegetable crops, as required.
- Carry out mulching with crop residue, straw or polythene to minimize the loss of soil moisture in the standing crops.

### Agromet advisories for likely impact of Thunderstorm / Gusty Winds

- Shift the harvested produce in safer places or cover the produce with tarpaulin sheets in the fields. Tie the harvested crops securely and cover them to minimize the risk of displacement from strong surface winds.
- Provide mechanical support to horticultural crops and staking or support to vegetables and young fruit plants / fruit-bearing plants to avoid lodging due to strong winds.

### **Livestock / Poultry / Fisheries**

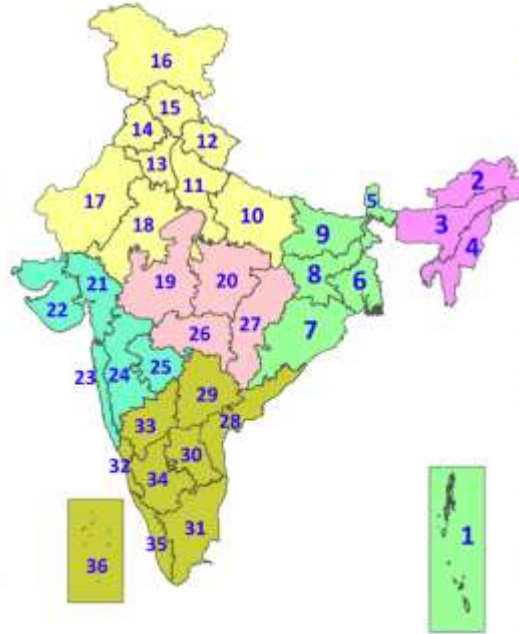
- Keep the animals inside the shed during heavy rainfall and provide them balanced feed.
- Store feed and fodder in a safe place to prevent spoilage.
- Construct an outlet with proper netting around the ponds to drain excess water, thereby preventing fish from escaping in the event of overflow.
- In regions with high temperatures and heat waves, provide clean, hygienic, and ample drinking water for animals, and cover the roofs of poultry sheds with grass to reduce the adverse effects.

### **Legends & abbreviations:**

- ❖ **Heavy Rain:**64.5115.5mm; **Very Heavy Rain:**115.6204.4mm; **Extremely Heavy Rain:** >204.4mm.
- ❖ **Obsy:** Observatory; Automatic Weather Station; **ARG:** Automatic Rain Gauge; **dist:** District; **NH:** National Highway; **KVK:** Krishi Vigyan Kendra; **DVC:** Damodar Valley Corporation; **PTO:** Part Time Office, **Aero:** Aerodrome, **IAF:** Indian Air Force.
- ❖ **Region wise classification of meteorological Sub-Divisions:**
  - **Northwest India:** Western Himalayan Region (Jammu-Kashmir-Ladakh-Gilgit-Baltistan-Muzaffarabad, Himachal Pradesh and Uttarakhand); Punjab, Haryana Chandigarh & Delhi; West Uttar Pradesh, East Uttar Pradesh, West Rajasthan and East Rajasthan.
  - **Central India:** West Madhya Pradesh, East Madhya Pradesh, Vidarbha and Chhattisgarh.
  - **East India:** Bihar, Jharkhand, Sub-Himalayan West Bengal & Sikkim; Gangetic West Bengal, Odisha and Andaman & Nicobar Islands.
  - **Northeast India:** Arunachal Pradesh, Assam & Meghalaya and Nagaland, Manipur, Mizoram & Tripura.
  - **West India:** Gujarat Region, Saurashtra & Kutch, Coastal Maharashtra (Konkan) & Goa, Madhya Maharashtra and Marathawada.
  - **South India:** Coastal Andhra Pradesh & Yanam, Telangana, Rayalaseema, Coastal Karnataka, North Interior Karnataka, South Interior Karnataka, Kerala & Mahe, Tamil Nadu, Puducherry & Karaikal and Lakshadweep.

## LEGENDS

1. अंडमान और निकोबार द्वीपसमूह
2. अरुणाचल प्रदेश
3. असम और मेघालय
4. नागालैंड, मणिपुर, मिजोरम और त्रिपुरा
5. उप-हिमालयी पश्चिम बंगाल और सिक्किम
6. गंगीय पश्चिम बंगाल
7. ओडिशा
8. झारखंड
9. बिहार
10. पूर्वी उत्तर प्रदेश
11. पश्चिम उत्तर प्रदेश
12. उत्तराखंड
13. हरियाणा, चंडीगढ़ और दिल्ली
14. पंजाब
15. हिमाचल प्रदेश
16. जम्मू और कश्मीर और लद्दाख
17. पश्चिम राजस्थान
18. पूर्वी राजस्थान
19. पश्चिम मध्य प्रदेश
20. पूर्वी मध्य प्रदेश
21. गुजरात
22. सौराष्ट्र
23. कोंकण और गोवा
24. मध्य महाराष्ट्र
25. मराठवाड़ा
26. विदर्भ
27. छत्तीसगढ़
28. तटीय आंध्र प्रदेश और यनम
29. तेलंगाना
30. रायलसीमा
31. तमिलनाडु, पुडुचेरी और कराईकल
32. तटीय कर्नाटक
33. आंतरिक उत्तरी कर्नाटक
34. आंतरिक दक्षिणी कर्नाटक
35. केरल और माहे
36. लक्षद्वीप



1. Andaman & Nicobar Islands
2. Arunachal Pradesh
3. Assam & Meghalaya
4. Nagaland, Manipur, Mizoram & Tripura
5. Sub-Himalayan West Bengal & Sikkim
6. Gangetic West Bengal
7. Odisha
8. Jharkhand
9. Bihar
10. East Uttar Pradesh
11. West Uttar Pradesh
12. Uttarakhand
13. Haryana, Chandigarh & Delhi
14. Punjab
15. Himachal Pradesh
16. Jammu & Kashmir and Ladakh
17. West Rajasthan
18. East Rajasthan
19. West Madhya Pradesh
20. East Madhya Pradesh
21. Gujarat
22. Saurashtra
23. Konkan & Goa
24. Madhya Maharashtra
25. Marathwada
26. Vidarbha
27. Chhattisgarh
28. Coastal Andhra Pradesh & Yanam
29. Telangana
30. Rayalaseema
31. Tamilnadu, Puducherry & Karaikal
32. Coastal Karnataka
33. North Interior Karnataka
34. South Interior Karnataka
35. Kerala & Mahe
36. Lakshadweep

## SPATIAL DISTRIBUTION (% of Stations reporting)

% Stations	Category	% Stations	Category
76-100	Widespread (WS/Most Places)	26-50	Scattered (SCT/A Few Places)
51-75	Fairly Widespread (FWS/Many Places)	1-25	Isolated (ISOL)

- |                      |                      |              |
|----------------------|----------------------|--------------|
| Fog                  | Heavy Snow           | Cold Wave    |
| Heavy Rain           | Dust Storm           | Cold Day     |
| Very Heavy Rain      | Heat Wave            | Ground Frost |
| Extremely Heavy Rain | Warm Night           |              |
| Thunder & Lightning  | Hot Day              |              |
| Hailstorm            | Hot & Humid          |              |
| Dust Raising Winds   | Strong Surface Winds |              |

### COLOUR CODED WARNING

No Warning (No Action)
Watch (Be Aware)
Alert (Be Prepared To Take Action)
Warning (Take Action)

### Probabilistic Forecast

Terms	Probability of Occurrence (%)
Unlikely	< 25
Likely	25 - 50
Very Likely	50 - 75
Most Likely	> 75

\* Red colour warning does not mean "Red Alert", Red colour warning means "Take Action".  
Forecast and Warning for any day is valid from 0830 hours IST of day till 0830 hours IST of next day.  
For more details, kindly visit <https://mausam.imd.gov.in> or contact: 011-2434-4599  
(Service to the Nation since 1875)

### DEFINITION/CRITERIA

<b>Rain/ Snow *</b>	<p><b>Heavy:</b> 64.5 to 115.5 mm/cm *</p> <p><b>Very Heavy:</b> 115.6 to 204.4 mm/cm*</p> <p><b>Extremely Heavy:</b> &gt; 204.4 mm/cm *</p>
<b>Heat Wave</b>	<p>When maximum temperature of a station reaches <math>\geq 40^{\circ}\text{C}</math> for plains and <math>\geq 30^{\circ}\text{C}</math> for hilly regions</p> <p><b>(a) Based on Departure from normal</b></p> <p><b>Heat Wave:</b> Maximum Temperature Departure from normal <math>4.5^{\circ}\text{C}</math> to <math>6.4^{\circ}\text{C}</math>.</p> <p><b>Severe Heat Wave:</b> Maximum Temperature Departure from normal <math>\geq 6.5^{\circ}\text{C}</math></p> <p><b>(b). Based on Actual maximum temperature</b></p> <p><b>Heat Wave:</b> When actual maximum temperature <math>\geq 45^{\circ}\text{C}</math>.</p> <p><b>Severe Heat Wave:</b> When actual maximum temperature <math>\geq 47^{\circ}\text{C}</math></p> <p><b>(c). Criteria for heat wave for coastal stations</b></p> <p>When maximum temperature departure is <math>&gt; 4.5^{\circ}\text{C}</math> from normal. Heat Wave may be described provided maximum temperature <math>\geq 37^{\circ}\text{C}</math></p>
<b>Warm Night</b>	<p><b>When maximum temperature remains <math>40^{\circ}\text{C}</math></b></p> <p><b>Warm Night:</b> When minimum temperature departure <math>4.5^{\circ}\text{C}</math> to <math>6.4^{\circ}\text{C}</math>.</p> <p><b>Severe Warm Night:</b> When minimum temperature departure <math>&gt; 6.4^{\circ}\text{C}</math>.</p>
<b>Cold Wave</b>	<p>When minimum temperature of a station <math>\leq 10^{\circ}\text{C}</math> for plains and <math>\leq 0^{\circ}\text{C}</math> for hilly regions.</p> <p><b>(a). Based on departure</b></p> <p><b>Cold Wave:</b> Minimum Temperature Departure from normal <math>-4.5^{\circ}\text{C}</math> to <math>-6.4^{\circ}\text{C}</math>.</p> <p><b>Severe Cold Wave:</b> Minimum Temperature Departure from normal <math>\leq -6.5^{\circ}\text{C}</math></p> <p><b>(b) Based on actual Minimum Temperature (for Plains only)</b></p> <p><b>Cold Wave :</b> When Minimum Temperature is <math>\leq 4.0^{\circ}\text{C}</math></p> <p><b>Severe Cold Wave:</b> When Minimum Temperature is <math>\leq 2.0^{\circ}\text{C}</math></p> <p><b>(c) For Coastal Stations</b></p> <p>When Minimum Temperature departure is <math>\leq -4.5^{\circ}\text{C}</math> &amp; actual Minimum Temperature is <math>\leq 15^{\circ}\text{C}</math></p>
<b>Cold Day</b>	<p>When minimum temperature of a station <math>\leq 10^{\circ}\text{C}</math> for plains and <math>\leq 0^{\circ}\text{C}</math> for hilly regions</p> <p><b>Based on departure</b></p> <p><b>Cold Day:</b> Maximum Temperature Departure from normal <math>-4.5^{\circ}\text{C}</math> to <math>-6.4^{\circ}\text{C}</math>.</p> <p><b>Severe Cold Day:</b> Maximum Temperature Departure from normal <math>\leq -6.5^{\circ}\text{C}</math></p>
<b>Fog</b>	<p><b>Phenomenon of small droplets suspended in air and the horizontal visibility <math>&lt; 1\text{km}</math></b></p> <p><b>Moderate Fog:</b> When the visibility between 500-200 metres</p> <p><b>Dense Fog:</b> when the visibility between 50- 200 metres</p> <p><b>Very Dense Fog:</b> when the visibility <math>&lt; 50</math> metres</p>
<b>Thunderstorm</b>	<p>Sudden electrical discharges manifested by a flash of light (Lightning) and a sharp rumbling sound (thunder)</p>
<b>Dust/Sand Storm</b>	<p>An ensemble of particles of dust or sand energetically lifted to great heights by a strong and turbulent wind.</p>
<b>Frost</b>	<p><b>Ice deposits on ground</b></p> <p>Air temperature <math>\leq 4^{\circ}\text{C}</math> ( over Plains)</p>
<b>Squall</b>	<p><b>A strong wind that rises suddenly, lasts for atleast 1 minute.</b></p> <p><b>Moderate:</b> Wind speed 52-61 kmph</p> <p><b>Severe:</b> Wind speed 62-67 kmph</p> <p><b>Very Severe:</b> Wind speed <math>&gt; 67</math> kmph</p>
<b>Sea State</b>	<p><b>Effect of various waves in the sea over specific area</b></p> <p><b>Rough to very rough:</b> Wind speed 41-62 kmph (22-33 knots) &amp; Wave height 2.5-6 metre</p> <p><b>High to very high:</b> Wind speed 63-117 kmph ( 34-63 knots) &amp; Wave height 6-14 metre</p> <p><b>Phenomenal:</b> Wind speed <math>&gt; 117</math> kmph (<math>&gt; 63</math> knots) &amp; Wave height <math>&gt; 14</math> metre</p>
<b>Cyclone</b>	<p><b>Cyclonic Storm:</b> Wind speed 62-67 kmph (34-47 knots)</p> <p><b>Severe Cyclonic Storm:</b> Wind speed 88-117 kmph (48-63 knots)</p> <p><b>Very Severe Cyclonic Storm:</b> Wind speed 118-165 kmph (64 - 89 knots)</p> <p><b>Extremely Severe Cyclonic Storm:</b> Wind speed 166-220 kmph (90 -119 knots)</p> <p><b>Super Cyclone Storm:</b> Wind speed <math>&gt; 220</math> kmph (<math>&gt; 119</math> knots)</p>

\* Red colour warning does not mean "Red Alert", Red colour warning means "Take Action".  
Forecast and Warning for any day is valid from 0830 hours IST of day till 0830 hours IST of next day.  
For more details, kindly visit <https://mausam.imd.gov.in> or contact: 011-2434-4599  
(Service to the Nation since 1875)